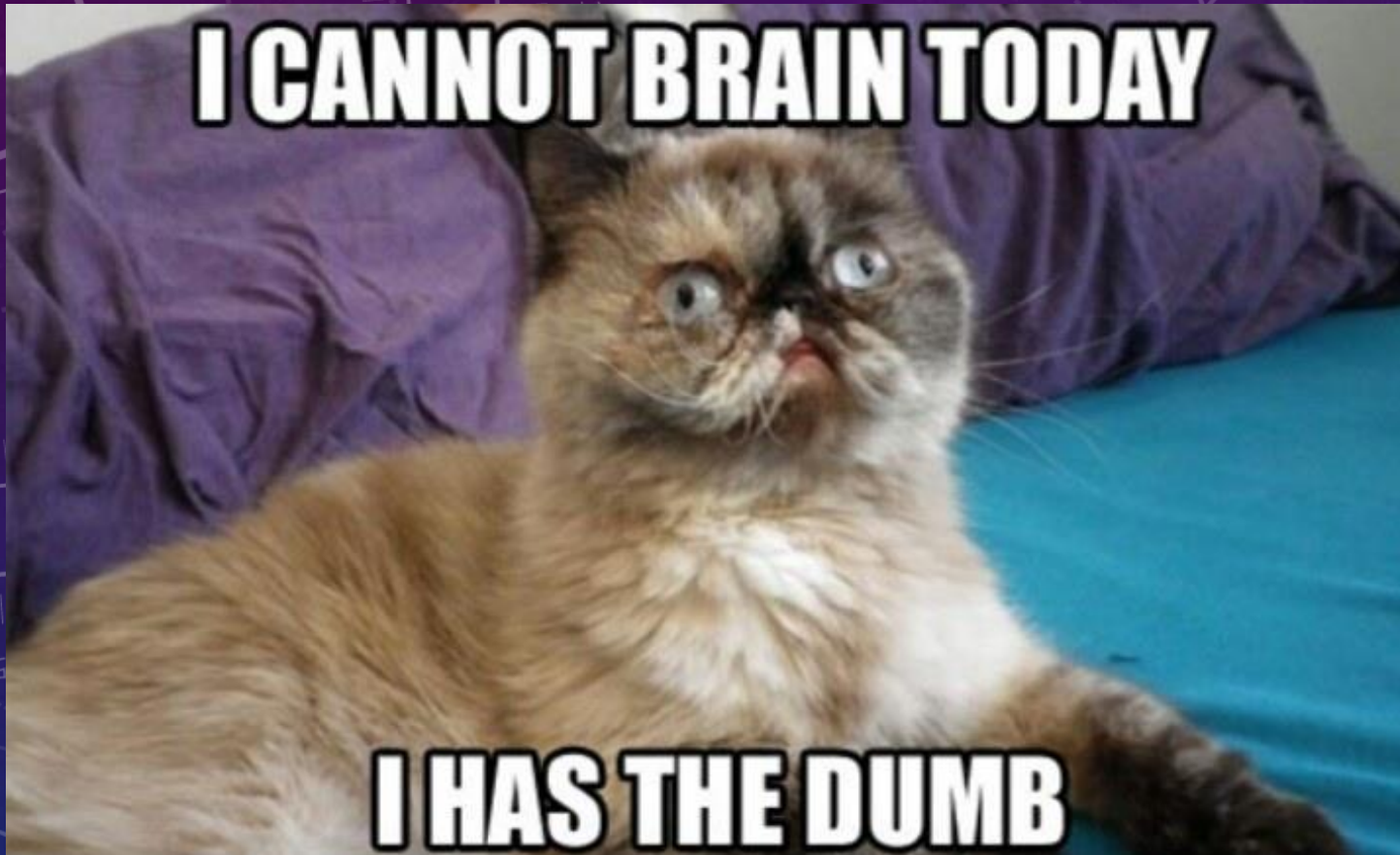


CIG FERALS



MAPPING

FEEDING

TRAPPING

WHY???

- Mainly to keep the rat population under control
- Too much animal feed kept on campus for it to be spoilt
- Similarly in Res, but with human food
- To monitor the cats on campus

FERAL MAPPING



Area	No. of cats	Age	Description	Sightings	Further Comments + photo taken (PT)
Hay Bales	2	1A 1K	Ginger Full black	multiple	Left ear tip snipped
Anatomy building	1	1K	Dark Tabby, long hair	1	Skinny
Res- P block	1	1A	Black + White	1	Noisy, male (PT)



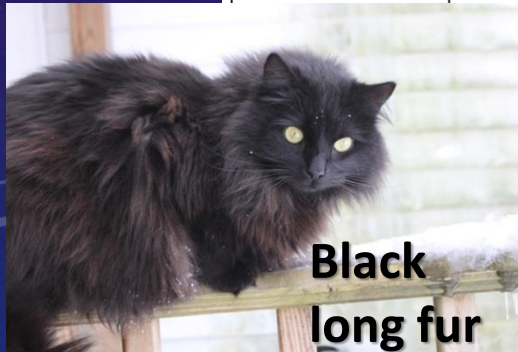
Tabby with white



Long fur tabby/
Main Coon type



Black and white



Black long fur



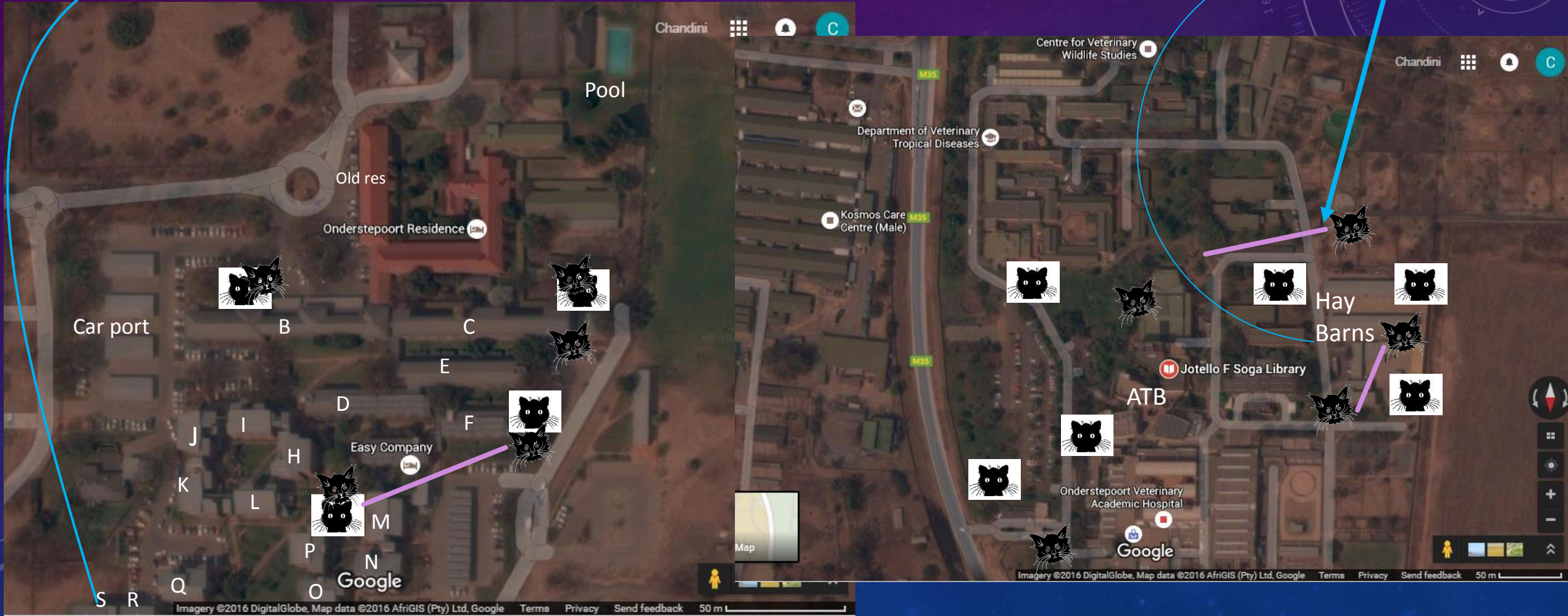
Calico



Ginger

FERAL MAPPING

- Part of creating a Feral database and drawing up a feral trail.
- I need you all, please take photos of any cats you see around campus.
- Especially the ones by QRS blocks in res and the hay barns



FERAL FEEDING

- **Basically.....**

- I will draw up a feeding roster
- You collect food from me
- I show you where the various feeding stations are
- You go preferably sometime in the evening on your feeding day to feed them
- Take pictures if you see any cats **Please** 😊



For all those old cat ladies



FERAL TRAPPING



DEMO



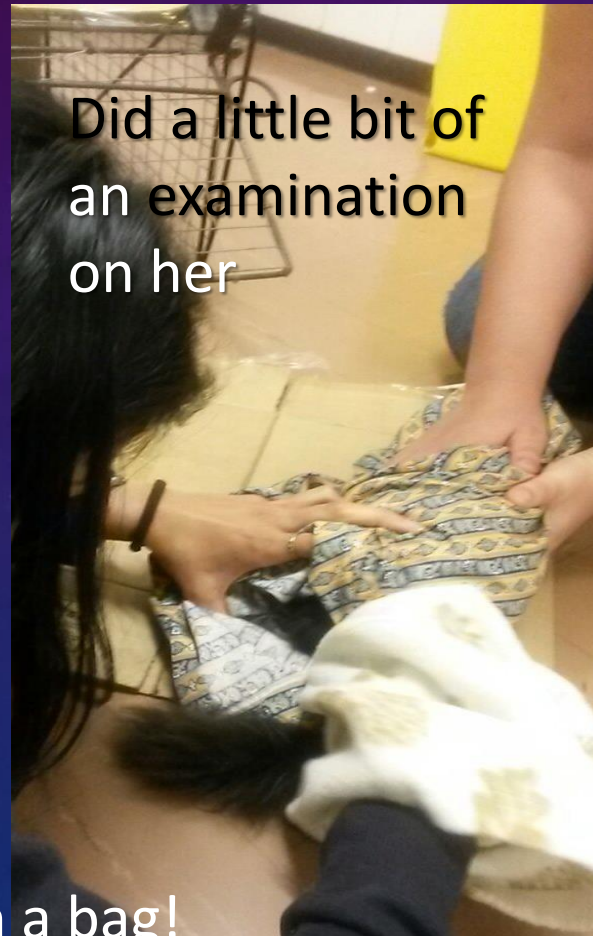
Play me...



Female
black and
white adult

FERAL TRAPPING

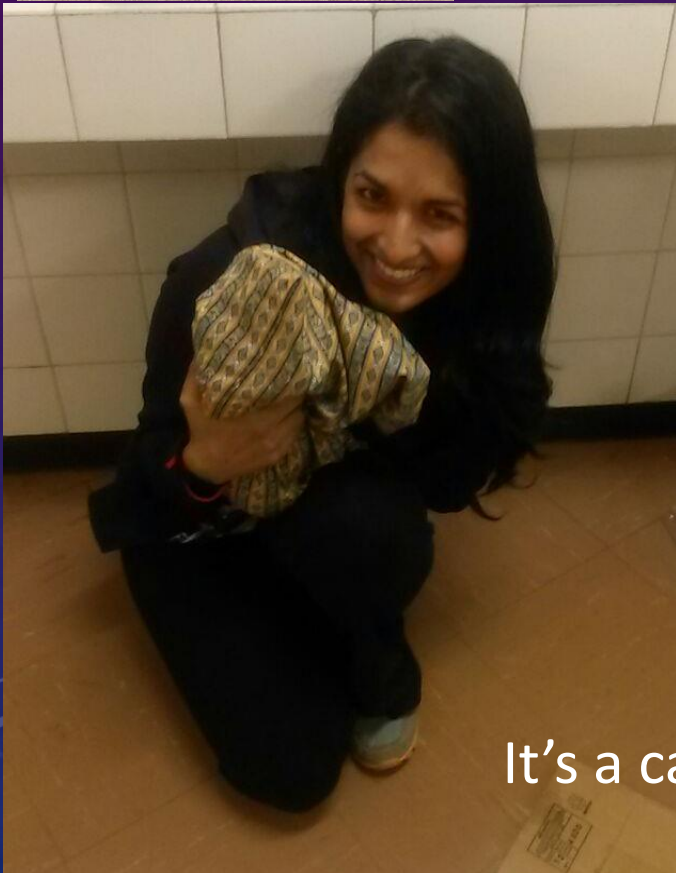
- What we caught.....



Did a little bit of
an examination
on her



But she was
nursing, so we had
to let her go




It's a cat in a bag!

WHAT ELSE WE CAUGHT...



Long hair,
assumedly
male
“teenager”





There is something about the presence of
a cat... that seems to take the
bite out of being alone.

- Louis Camuti

Wishafriend.com

CREDITS...

- Mostly Google images and Google Earth Maps
- Feral Photos courtesy of Caitlin Williams and Sinead Laing and Chandini Isvarlal
- Feral Trapping photos and video courtesy of Kathleen Edmonds