



water affairs
Department:
Water Affairs
REPUBLIC OF SOUTH AFRICA

URBAN HYDROLOGY WORKSHOP: WATER IN THE CITY OF TSHWANE

High Performance Centre, Hatfield, 23 – 24 January 2014

Moreletaspruit – the Bigger Picture

Presented by: R Botha
Chief Engineer Water Resources Management

WATER IS LIFE - RESPECT IT, CONSERVE IT, ENJOY IT.

CONTENTS

- **Background to catchment management**
- **Establishment of catchment management agencies**
- **Revised water management areas**
- **Limpopo catchment management agency**
- **Moreletaspruit perspective**

2

WATER IS LIFE - RESPECT IT, CONSERVE IT, ENJOY IT.

POLICY AND CONTEXT

- **The Department of Water Affairs (DWA) is the custodian of water resources nationally and is responsible for policy development and regulation of the sector**
- **Has a mandate to establish Water Management Institutions (WMI) for the development and management of water resources**

3

WATER IS LIFE - RESPECT IT, CONSERVE IT, ENJOY IT.

LEGISLATIVE MANDATE

- **CMA's are established in terms of section 78(1) of the National Water Act, 1998 (Act No 36 of 1998)**
- **Statutory bodies established in terms of Chapter 7 of the National Water Act and listed as schedule 3a entities under the PFMA = Public entity for service delivery**

4

WATER IS LIFE - RESPECT IT, CONSERVE IT, ENJOY IT.

MANDATE

- The purpose of a CMA is to delegate water resource management to the catchment level and to involve local communities in decision-making processes.
- Water resource management is required to:
 - meet the basic human needs of present and future generations;
 - promote equitable access to water;
 - redress the results of past racial and gender discrimination; and
 - facilitate social and economic development.

5

WATER IS LIFE - RESPECT IT, CONSERVE IT, ENJOY IT.

ESTABLISHMENT OF CATCHMENT MANAGEMENT AGENCIES

- The national water resource strategy (NWRS) 2004
 - 19 Catchment Management Agencies (CMA) one per Water Management Area (WMA)
 - six CMAs gazetted for establishment
 - two CMAs currently functional: the Inkomati and Breede-Overberg
- The process of establishing CMAs was put on hold
 - Appropriate number of institutions was investigated through “Institutional Reform and Realignment” (IRR) project

6

WATER IS LIFE - RESPECT IT, CONSERVE IT, ENJOY IT.

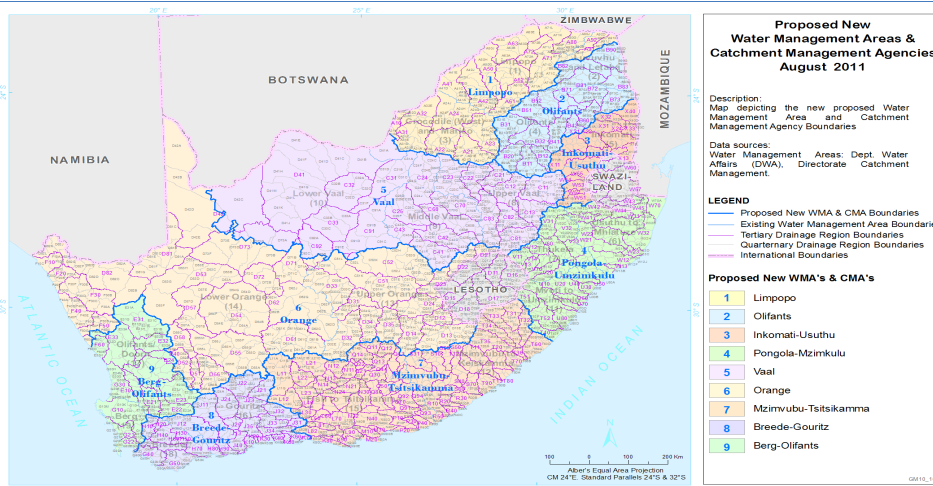
ESTABLISHMENT OF CATCHMENT MANAGEMENT AGENCIES

- 19 March 2012, the Minister announced the establishment of nine CMAs and submission was signed in April 2012
- 20 July 2012, 9 WMAs were gazetted (Gazette No. 35517) for 90 days public comment
- The nine WMAs are
 - Limpopo;
 - Olifants;
 - Inkomati-Usuthu;
 - Pongola-Mzimkulu;
 - Vaal;
 - Orange;
 - Mzimvubu-Tsitsikama;
 - Breede-Gouritz and
 - Berg-Olifants

7

WATER IS LIFE - RESPECT IT, CONSERVE IT, ENJOY IT.

NEW WATER MANAGEMENT AREAS



8

WATER IS LIFE - RESPECT IT, CONSERVE IT, ENJOY IT.

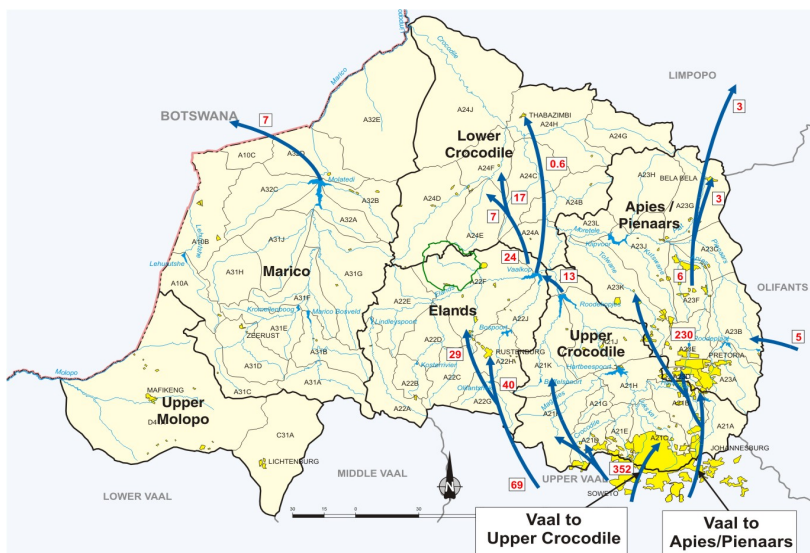
LIMPOPO CATCHMENT MANAGEMENT AGENCY

- A notice was published in the Government Gazette on 8 November 2013, proposing
 - the establishment of a catchment management agency, situated in the Crocodile (West) – Marico and Limpopo water management area, including the Letaba catchment
 - that the agency be named the Limpopo Catchment Management Agency

9

WATER IS LIFE - RESPECT IT, CONSERVE IT, ENJOY IT.

MORELETA CATCHMENT IN PERSPECTIVE



10

WATER IS LIFE - RESPECT IT, CONSERVE IT, ENJOY IT.

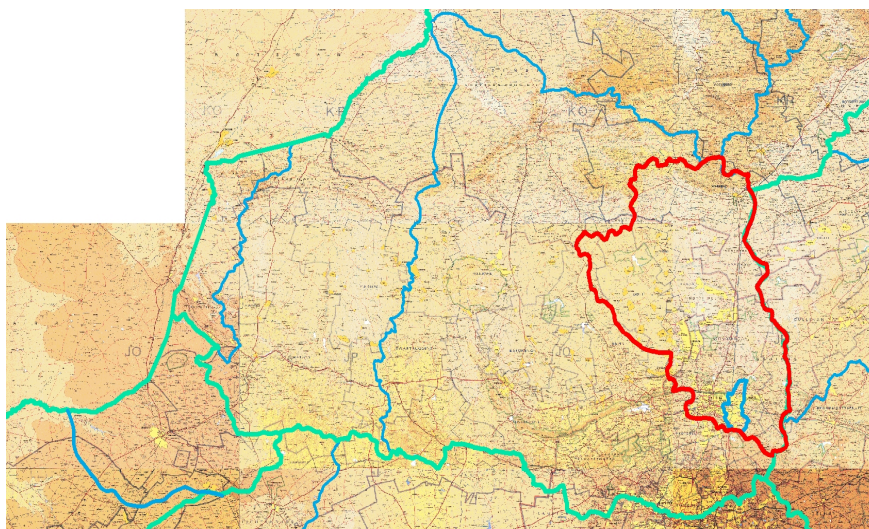
MORELETA CATCHMENT IN PERSPECTIVE



11

WATER IS LIFE - RESPECT IT, CONSERVE IT, ENJOY IT.

MORELETA CATCHMENT IN PERSPECTIVE



12

WATER IS LIFE - RESPECT IT, CONSERVE IT, ENJOY IT.

MORELETA CATCHMENT IN PERSPECTIVE

- **WATER RESOURCE MANAGEMENT ISSUES**
 - Stormwater management
 - Pollution incidents
 - Clearing of invasive alien plants
 - Colbyn wetland
 - Catchment management strategy

13

WATER IS LIFE - RESPECT IT, CONSERVE IT, ENJOY IT.

THANK YOU

14

WATER IS LIFE - RESPECT IT, CONSERVE IT, ENJOY IT.