


URBAN HYDROLOGY: WATER IN THE CITY OF TSHWANE
High Performance Centre, University of Pretoria
23 – 24 January 2014

**ADOPT MORELETASPRUIT –
CARING FOR A CITY STREAM**


ANNELI KÜHN
ADOPT MORELETASPRUIT FORUM



COMMUNITY PARTICIPATION

One of the cornerstones of the South
African Water Act
(Act No 36 of 1998)

2014/02/03 © www.up.ac.za/watertshwane





AIM OF PRESENTATION

To illustrate how
volunteer interest groups
in the
Moreleta- /Hartbeesspruit catchment
can successfully co-operate with
relevant authorities
towards the realisation of a common goal
*To conserve and improve the quality of the Moreleta-
and the Hartbeesspruit and their tributaries to a state
that is an asset to the people of the City of Tshwane*

2014/02/03

© www.up.ac.za/watertshwane



MORELETA/HARTBEESSPRUIT CATCHMENT - BACKGROUND



2014/02/03

© www.up.ac.za/watertshwane





THE MORELETA-/ HARTBEESSPRUIT CATCHMENT

- Lies in upper reaches of Pienaars River catchment, (part of newly established Limpopo/ Crocodile-West/ Marico Rivers CMA)
- Moreletaspruit and tributaries originate in the flat ridges to the south and east of Pretoria,
- Flow through:
 - Eastern suburbs
 - Industrial areas of Silverton and Waltloo.
 - Eersterust and Derdepoort Reserve—where Moreleta joins the Hartbeesspruit
 - Kameeldrift smallholdings before entering Roodeplaai Dam where it joins the Pienaars River.
- Contribute to water supply for many downstream communities, industries, mines and farms in Limpopo catchment
- Surface area $\approx 165 \text{ km}^2$ Population $\approx 300\,000$ people

2014/02/03

© www.up.ac.za/watertshwane



2014/02/03

© www.up.ac.za/watertshwane





VALUE OF THE MORELETASPRUIT

- Worldwide increasing recognition of importance green spaces for health and well-being of people
- Aesthetic value
- Recreational activities
 - Hiking
 - Cycling
 - Bird-watching
- Ecological importance serve as migration corridor for indigenous fauna living in the area
- Environmental education and training

2014/02/03

© www.up.ac.za/watertshwane



2014/02/03

© www.up.ac.za/watertshwane





HIKING TRAILS ALONG THE SPRUIT



2014/02/03

© www.up.ac.za/watertshwane



HIKING



2014/02/03

© www.up.ac.za/watertshwane





AESTHETIC VALUE

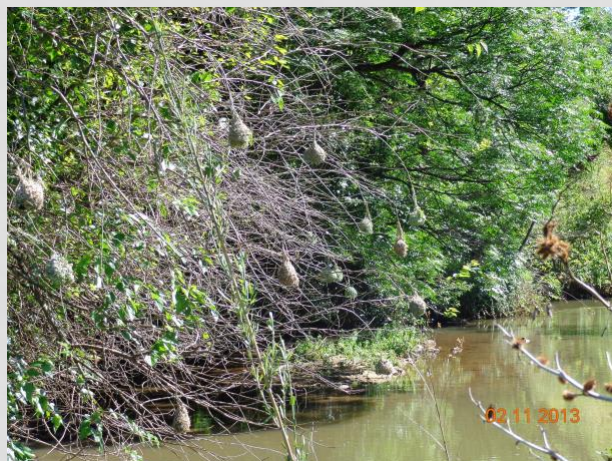


2014/02/03

© www.up.ac.za/watertshwane



BIRD WATCHING OPPORTUNITIES



2014/02/03

© www.up.ac.za/watertshwane





A DIKKOP NESTING



2014/02/03



EVEN EAGLE OWLS!



2014/02/03

© www.up.ac.za/watertshwane





EDUCATION AND TRAINING



Learners of Eersterust Secondary School are carrying out a biomonitoring exercise in the Rietspruit tributary of the Moreletaspruit

2014/02/03

© www.up.ac.za/watertshwane



CONDITION OF THE MORELETA-/ HARTBEESSPRUIT AND TRIBUTARIES

- Not a natural river system anymore- exposed to overuse and even abuse for many years
 - Farming
 - Population densification - located in rapidly developing area
 - Commercial developments and industrialisation.
- Wetlands destruction (shops and car parks)
- Floodplain intrusion
- Dumping of building rubble and litter
- Invasion of alien vegetation along sections of river
- Sewage leaks and unlawful industrial effluent discharges affect water quality adversely.

2014/02/03

© www.up.ac.za/watertshwane





LITTER AND DUMPING



• Plastic and other rubbish



Mattresses dumped in the Rietspruit

2014/02/03

© www.riv.co.za/ms



VISUAL POLLUTION



2014/02/03

© www.up.ac.za/watertshwane





SEWAGE SPILL



2014/02/03

© www.up.ac.za/watertshwane



SILTATION



Eroded topsoil in the Spruit

2014/02/03

© www.up.ac.za/watertshwane





EROSION DAMAGE



Erosion cutting away the banks of the Moreleta

2014/02/03

© www.up.ac.za/watertshwane



WHAT COULD BE DONE?

- Restoration of Moreletaspruit to “natural” state” not attainable
- City of Tshwane and DWA take their management responsibilities seriously - cannot be aware of everything happening in Spruit at all times.
- **Assistance by the community dearly needed**

2014/02/03

© www.up.ac.za/watertshwane



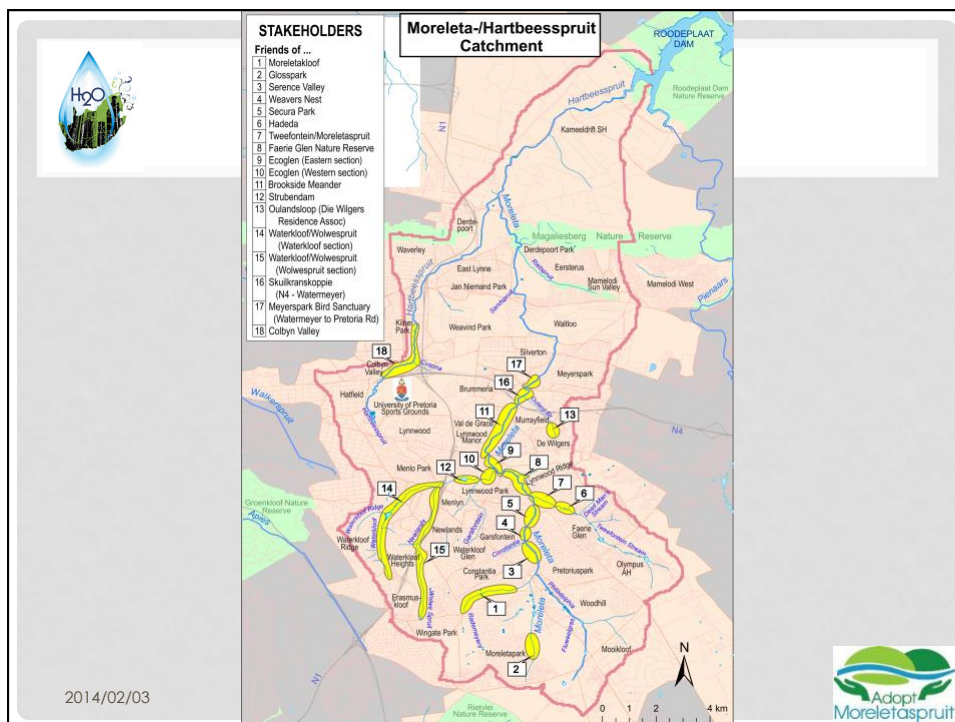


FRIENDS OF THE MORELETA

- Concerned citizens and interest groups mostly living along Moreleta- and Hartbeespruit have recognised need for assistance
- Organised themselves some years ago as volunteer Friends of the Moreleta and **Colbyn Valley** under auspices of Environmental Section of City of Tshwane Municipality
- Affiliated to WESSA (Wildlife and Environmental Society of Southern Africa),
- Been doing **valuable voluntary work** for several years
- Groups working independently

2014/02/03

© www.up.ac.za/watertshwane





ADOPT-A-RIVER PROGRAMME

- During construction of the Moreleta Outfall Sewer (MOS) some representatives of Friends groups along the Spruit became very concerned about the damage done to the banks and ecology of Spruit
- Aware of the complexity and extent of task to restore the damage
- A much more co-ordinated effort necessary
- **Decided to join DWA's Adopt-a-River programme in 2010**

2014/02/03

© www.up.ac.za/watertshwane



ADOPT-A-RIVER PROGRAMME (CONT.)

- Main aim of A-a-R programme is to create awareness among South Africans to care for our scarce water resources and **to facilitate community participation in the protection and management of these resources**
- *Joining the A-a-R provided opportunity for volunteer Friends of the Moreleta and the wider community within Moreleta/Hartbeesspruit catchment to work closely with CoT Municipality and DWA to improve quality of Moreleta*

2014/02/03

© www.up.ac.za/watertshwane





ADOPT MORELETASPRUIT FORUM

- Co-operation between DWA, CoT and volunteer Friends groups culminated in the establishment of the **Adopt Moreletaspruit Forum** (crucial role played by Environmental Section of CoT Municipality)
- Regular meetings 3rd Thursday of every month- attended by representatives of:
 - CoT
 - DWA
 - Friends groups (form the backbone of the Forum)
 - Tertiary educational Institutions (UP, Centurion Academy)
 - Developers
 - Industry
 - Other people interested in well-being of the Moreleta- and Hartbeesspruit

2014/02/03

© www.up.ac.za/watertshwane



BENEFITS OF SUCCESSFUL CO-OPERATION

Adopt Moreletaspruit Forum became part of a structured and sustainable Adopt-a-River Programme with Institutional support by DWA

- DWA funded a **Situational analysis of Moreletaspruit Catchment**
- Understanding of characteristics of Moreleta Catchment and how land use and other activities impact on the health of Moreleta and tributaries
- Contact with newly constituted Limpopo/ Crocodile-West/ Marico Rivers CMA – re-establishment of MAP Forum

2014/02/03

© www.up.ac.za/watertshwane





BENEFITS OF SUCCESSFUL CO-OPERATION

- Forum created a strong alliance between DWA, CoT and volunteer Friends - improved relationships
 - Put names to faces - who to contact when pollution incidents and other problems occur (who is responsible for what)
- Forum members became effective eyes and ears of relevant authorities – timely reporting of illegal activities and pollution incidents
- Master Environmental Management Plan (in preparation) will facilitate correct and co-ordinated implementation of procedures for use of Spruit and activities within the Spruit

2014/02/03

© www.up.ac.za/watertshwane



BENEFITS OF SUCCESSFUL CO-OPERATION (CONT.)

- Friends Groups act in more co-ordinated and integrated way
 - Understanding of impacts of activities in catchment on downstream users
 - Learn from each other's experiences
 - Participate in each other's activities: clean-ups, removal of alien vegetation, tree planting, bird watching, frog identification and many more fun activities
- Newsletter regularly produced - reports on activities of Friends Groups – pollution problems in Spruit - interesting info on plants, birds and animals found along the Moreletaspruit and its tributaries etc.

2014/02/03

© www.up.ac.za/watertshwane





BENEFITS OF SUCCESSFUL CO-OPERATION (CONT.)

- Website (www.riv.co.za/ms) – information on Adopt Moreletaspruit Forum and its activities
- Training and education activities of learners and students in the Moreleta and tributaries are co-ordinated/ facilitated by Forum (e.g. biomonitoring by secondary schools in Eersterust, practical's of students of UP and Centurion Academy)
- Networking done to create awareness of need to preserve Moreletaspruit and tributaries as important green zone (newsletter, website, articles in newspapers and presentations at workshops)

2014/02/03

© www.up.ac.za/watertshwane



TRAINING - LEARNERS IDENTIFYING INVERTEBRATES



2014/02/03

© www.up.ac.za/watertshwane

32



FRIENDS OF BROOKSIDE MEANDER REMOVING ALIEN VEGETATION



2014/02/03

© www.up.ac.za/watertshwane



ARC STAFF ASSISTING FRIENDS OF COLBYN VALLEY WITH CLEAN-UP



2014/02/03

© www.up.ac.za/watertshwane

34



HELP FOR FRIENDS OF BROOKSIDE MEANDER



Staff from Ford Motor Company SA cleaning up the Moreletaspruit south of the N4

2014/02/03

© www.up.ac.za/watertshwane

35



BUT.....MUCH STILL NEEDS TO BE DONE!

Invitation to everybody living and working in the Moreleta- /Hartbeesspruit catchment as well as other interested parties

- Become involved in the Adopt Moreletaspruit initiative and join the Forum
- Help to fulfil our Vision of a *A city stream and its tributaries in a healthy ecological state, serving as a valuable nature area that will add to the quality of life of the people of the City of Tshwane.*

2014/02/03

© www.up.ac.za/watertshwane





MEMBERSHIP APPLICATION FORM




-
-
-
- Adopt Moreletaspruit Forum
-
- **Surname:**
- **Title:**
- **First Name/s:**
- **Name of Organisation (if applicable)**
- **Postal Address:**
-
- **Tel No:**
- **Cell No:**
- **Email Address:**
- **Brief description of organisation, geographical area and/or area of interest:**
-
-
- **Do you have any skills and/or resources that Adopt Moreletaspruit may call upon?**
-
-
- **Membership Fees: at present there are no membership fees**
- **Please return completed form to our secretary, Erica van Zyl: Email: Erica@vanzyls.co.za**

2014/02/03

© www.up.ac.za/watertshwane






ACKNOWLEDGEMENTS

- Prof Hannes Rautenbch and Mr Matthys Dippenaar for inviting the Adopt Moreletaspruit Forum to participate in the Workshop
- Ms Ingrid Booysen, Senior Cartographer at Dept. of Geography at UP for preparation of maps used in presentation
- All the members of the Adopt Moreletaspruit Forum and in particular Dr Mike Silberbauer for material and assistance in the preparation of the presentation

2014/02/03

© www.up.ac.za/watertshwane





ADOPT MORELETASPRUIT FORUM CONTACT DETAILS

- Website: www.riv.co.za/ms
- DWA National Office – Ms Caroline Shai
 - Tel: 012 336 6951 or 082 885 9581 Email: shaic@dwa.gov.za
- DWA: Gauteng Region – Ms Thabie Rakgotho
 - Tel: 012 392 1362. Email: RakgothoT@dwa.gov.za
- CoT: Nature Conservation –Ms Adelene Marais
 - Tel: 012 358 1510. Email: AdeleneL@TSHWANE.GOV.ZA
- Adopt Moreletaspruit Forum – Dr Anneli Kuhn
 - Tel: 083 750 2873 Email: anneli.kuhn@gmail.com

SPONSORS AND ENDORSEMENTS



UNIVERSITEIT VAN PRETORIA
UNIVERSITY OF PRETORIA
YUNIBESITHI YA PRETORIA



Southern African Institute for Water and Society



Past, present and future



Council for Geoscience

SANBI

Biodiversity for Life

